



Hot Mounting Compounds

Products	PT 2231	BB 2232	TM 2261	EP 2237	DC 2239	MA 2275
Description	Phenolic Resin	Glass fiber filled Phenolic	Transparent	Glass fiber filled Epoxy	Conductive	Mineral filled melamine resin
Components	black/red/green grit	black grit	white powder	black grit	Black-Brown Grit with powder	light yellow to white powder
Heat time	4-6min	4-6min	6-8min	5-7min	4-6min	4-7min
Cooling time	2-3min	2-3min	7-10min	4-6min	4-6min	5-8min
Cooling speed	High/Medium	High/Medium	Low	Medium	High	Medium
Pressure	100-300bar	100-150bar	100-150bar	100-300bar	100-300bar	100-300bar
Heat temperature	150-180°C	140-180°C	160-180°C	150-180°C	150-180°C	150-180°C
Hardness (Shore D)	85-90	90-93	85-87	90-93	90-92	88-90

*The above parameters is base on Ø30mm mold.

PT 2231



Features: Low price, black, green and red phenolic grit.
Application: For routine applications suit for most products.

Order No:			Package
Black	Green	Red	
02.01.310	02.01.311	02.01.312	1kg
02.01.320	02.01.321	02.01.322	4kg
02.01.325	02.01.326	02.01.327	20kg

DC 2239



Features: Excellent conductive, voltage loss almost eliminated completely.
Application: SEM analysis.

Order No:	Package
02.01.910	1kg
02.01.940	4kg
02.01.945	20kg

BB 2232



Features: Extreme hardness, very good grinding and polishing properties, does not stick on embedding instruments, non adherent.
Application: All hard materials, e.g. hardened gears, hard metals and ceramics.

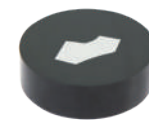
Order No:	Package
02.01.210	1kg
02.01.220	4kg
02.01.225	20kg

TM 2261



Features: Transparent and very clear, allows easy sample observation.
Application: Same as TM 2235 and can be dissolved by Trojan special solvent.

Order No:	Package
02.01.140	1kg
02.01.144	4kg
02.01.145	20kg



EP 2237

Features: Thin, extreme hardness, optimal edge connection, good adhesion to the specimen surface, very good grinding and polishing properties.

Application: All hard materials, e.g. hard gears, metals and ceramics.

Order No:	Package
02.01.710	1kg
02.01.720	4kg
02.01.751	20kg



MA 2275

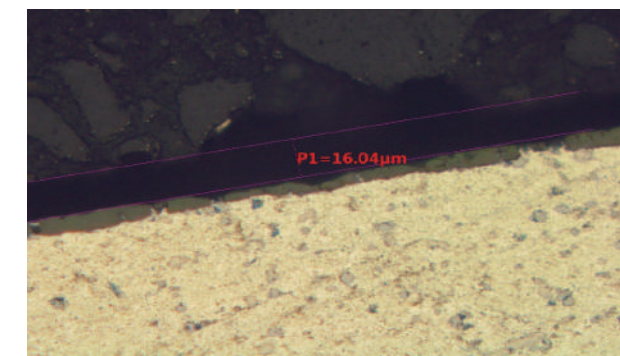
Features: High hardness, optimum edge connection, good adhesion to the sample surface, very good grinding and polishing properties, suitable for black surface specimen.

Application: Medium hard materials like normal hard metals, steel in general, aluminum, copper materials, etc.

Order No:	Package
02.01.960	1kg
02.01.965	4kg
02.01.970	20kg



Good edge connection



Gap





Cold Mounting System

Mounting

System	Acrylic System		Epoxy System					
	Used for rapid cure times, or need large volume sample preparation.		Used for excellent flow and penetration, or when better adhesion, chemical resistance, less shrinkage and clarity are required.					
Products	TJ 2210	TJ 2800	TJ 2220	TJ 2568	TJ 2221	TJ 2226	TJ 2227 Conductive	TJ 2562
Part A	Powder	Powder	Liquid	Liquid	Liquid	Liquid	Liquid	Liquid
Part B	Liquid	Liquid	Liquid	Liquid	Liquid	Liquid	Liquid	Liquid
A:B (w/w)	10:8	10:5	2:1	4.5:1	2:1	4.5:1	4.5:1	3:1
Pot life	2-4min	2-4min	4-8min	5-10min	5-10min	10-20min	10-20min	30-60min
Cure time 25°C	8-12min	8-10min	30-60min	45-90min	1-2hour	4-6hour	4-6hour	10-12hour
Peak temperature	80°C	85°C	144°C	125°C	112°C	90°C	90°C	<32°C
Hardness (Shore D)	80	82-83	82	82	78	82	82	80
Edge protection	Good	Better	Better	Excellent	Good	Excellent	Better	Better

*The above parameters is in 30mm mold.25°C

*The Trojan Dissolver is a blend of solvents that when heated removes cured resin from a specimen.

Acrylic Curing System is typically used for rapid cure times, or When large volume sample throughput is needed.



TJ 2210 Acrylic Resin

Features: High transparent, good flow and penetration. especially for PCB and other electronic components.

Order No:	Description	Package
02.03.411	White, Resin, Powder	1kg
02.03.412	Hardener, Liquid	800ml
02.03.421	White, Resin, Powder	2.5kg
02.03.423	Hardener, Liquid	2000ml



TJ 2800 Acrylic Resin

Features: Translucent, good edge protection, low shrinkage. Cure with the mounting pressure pot.

Order No:	Description	Package
02.03.511	White, Resin, Powder	1kg
02.03.512	Hardener, Liquid	1000ml

Epoxy Curing System is typically used for excellent flow and penetration, or when better adhesion, chemical resistance, less shrinkage and clarity are required.



TJ 2220 Epoxy Fast (2:1)

Features: Transparent yellowish fast cure epoxy system, good adhesion.

Order No:	Description	Package
02.04.660	Epoxy Resin, Liquid	2kg
02.04.661	Hardener, Liquid	1kg



TJ 2568 Epoxy Quick (4.5:1)

Features: Clear, fast curing epoxy system, low shrinkage, excellent adhesion.

Order No:	Description	Package
02.04.857	Epoxy Resin, Liquid	1kg
02.04.858	Hardener, Liquid	230g



TJ 2221 Epoxy King (2:1)

Features: Clear, general purpose fast cure epoxy system.

Order No:	Description	Package
02.04.721	Epoxy Resin, Liquid	2kg
02.04.722	Hardener, Liquid	1kg



TJ 2226 Epoxy Resin (4.5:1)

Features: Clear, transparent, general purpose slow cure epoxy resin.

Order No:	Description	Package
02.04.773	Epoxy Resin, Liquid	1kg
02.04.774	Epoxy Curingagent, Liquid	230g



TJ 2562 Epoxy Thin (3:1)

Features: Clear, low viscosity and very low peak temperature, good adhesion.

Order No:	Description	Package
02.04.853	Epoxy Resin, Liquid	1.5kg
02.04.854	Hardener, Liquid	0.5kg



TJ 2227 Epoxy Resin (2:1)

Features: Colorless and transparent, electrically conductive, suitable for SEM analysis.

Order No:	Description	Package
02.04.920	Epoxy Resin, Liquid	1kg
02.04.921	Epoxy Curingagent, Liquid	0.5kg

Low energy UV curable resin, high transparency and low heat release, cured after about 1 minute. Ideal for curing samples that require fast, batch volumes.



TJ 2400 UV Curing Resin

Features: Resin with fast curing speed, high transparency and low heat release.

Order No:	Description	Package
02.05.110	UV Curable Resine	1kg
02.05.120	UV Curable Resine	5kg

Mounting



Mounting Accessories

Sample Holding Clips

Made of PET material or SUS material, it has the characteristics of good elasticity, beautiful and practical.

Order No:	Description	Package
① 07.06.020	White X-shaped sample clip	100pcs/pkg
② 07.06.030	Transparent X-shaped sample clip	100pcs/pkg
③ 07.06.050	Green X-shaped sample clip	100pcs/pkg
④ 07.06.040	Red X-shaped sample clip	100pcs/pkg
⑤ 07.01.010	Plastic Coil Clip, 6*100mm	100pcs/pkg
07.01.012	Plastic Coil Clip, 6*100mm	1000pcs/pkg
⑥ 07.01.016	Stainless Steel Clip, 7*120mm	100pcs/pkg
07.01.017	Stainless Steel Clip, 7*120mm	1000pcs/pkg
⑦ 07.06.010	Black X-shaped sample clip	100pcs/pkg
⑧ 07.06.010	S Black Plastic Clip, 20*10*8mm	100pcs/pkg



2-Part Mounting Cups

Reusable cup has a separable bottom, which is easy to remove mounting sample after curing.

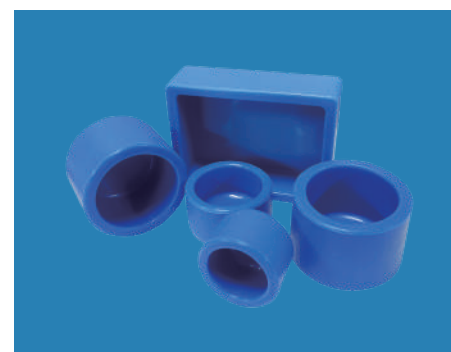
Order No:	Description	Package
08.02.002	Separate Firm Molds, $\Phi 25 \times 20$ mm	10pcs
08.02.004	Separate Firm Molds, $\Phi 30 \times 23$ mm	10pcs
08.02.006	Separate Firm Molds, $\Phi 32 \times 25$ mm	10pcs
08.02.008	Separate Firm Molds, $\Phi 40 \times 27$ mm	10pcs



Silicone Mold Cups

Durable, reusable silicone mold cups are widely used for acrylic and epoxy mounting system.

Order No:	Description	Package
08.02.018	Silicone, $\Phi 20 \times 18$ mm(depth)	10pcs
08.02.020	Silicone, $\Phi 25 \times 18$ mm(depth)	10pcs
08.02.022	Silicone, $\Phi 30 \times 18$ mm(depth)	10pcs
08.02.030-1	Silicone, $\Phi 40 \times 25$ mm(depth)	10pcs
08.02.050	Silicone, 50*70*20mm(rectangle)	10pcs
08.02.058	Silicone, 180*106*30mm(rectangle)	10pcs



EtaKit Mounting Splitter

EtaKit Splitter is used to release oval mounting cups, easy, efficient.

Order No:	Description	Package
13.20.003	Apply to 2-part mounting cups	1pc/pkg



Transparent Silicone Mold Cups

Transparent, Durable, reusable silicone mold cups are widely used for UV light-curing embedding materials.

Order No:	Description	Package
08.02.022-3	$\Phi 30 \times 18$ mm(deep)	10pcs
08.02.024-4	$\Phi 31 \times 30$ mm(deep)	10pcs
08.02.030-3	$\Phi 40 \times 27$ mm(deep)	10pcs
08.02.055-1	50*50*20mm(Transparent)	10pcs



Teflon Mold Cups

Durable, reusable Teflon mold cups are very easy to remove mounting samples after curing.

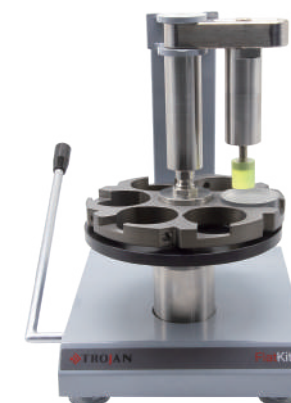
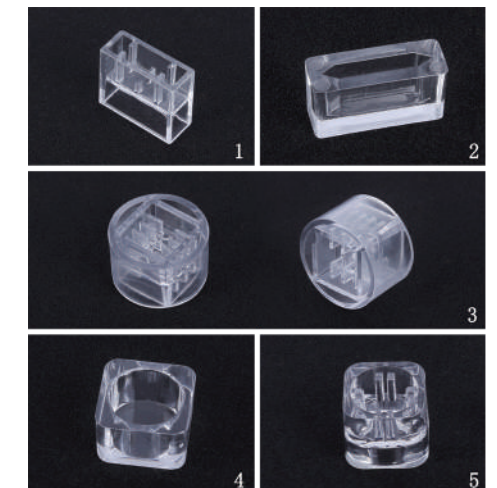
Order No:	Description	Package
08.02.110	Teflon, easy release, $\Phi 25$ mm	1pc
08.02.120	Teflon, easy release, $\Phi 30$ mm	1pc
08.02.132	Teflon, easy release, $\Phi 40$ mm	1pc



Disposable Mounting Cups

Economical choice for high volume mounting requirements.

Order No:	Description	Package
① 08.01.013	24*20*10mm, Single lattice	500pcs
08.01.015	22*11*8mm, Single lattice	500pcs
② 08.01.016	22*11*8mm, Single lattice	1000pcs
08.01.030	$\Phi 30$ mm, externally circular and internally square	100pcs
③ 08.01.032	$\Phi 30$ mm, externally circular and internally square	200pcs
08.01.035	$\Phi 30$ mm, externally circular and internally square	500pcs
④ 08.01.038	20*20*12.3 mm, externally square and internally circular	500pcs
⑤ 08.01.039	20*20*12.3 mm, externally square and internally circular	1000pcs



Sample Flattener





GRINDING AND POLISHING

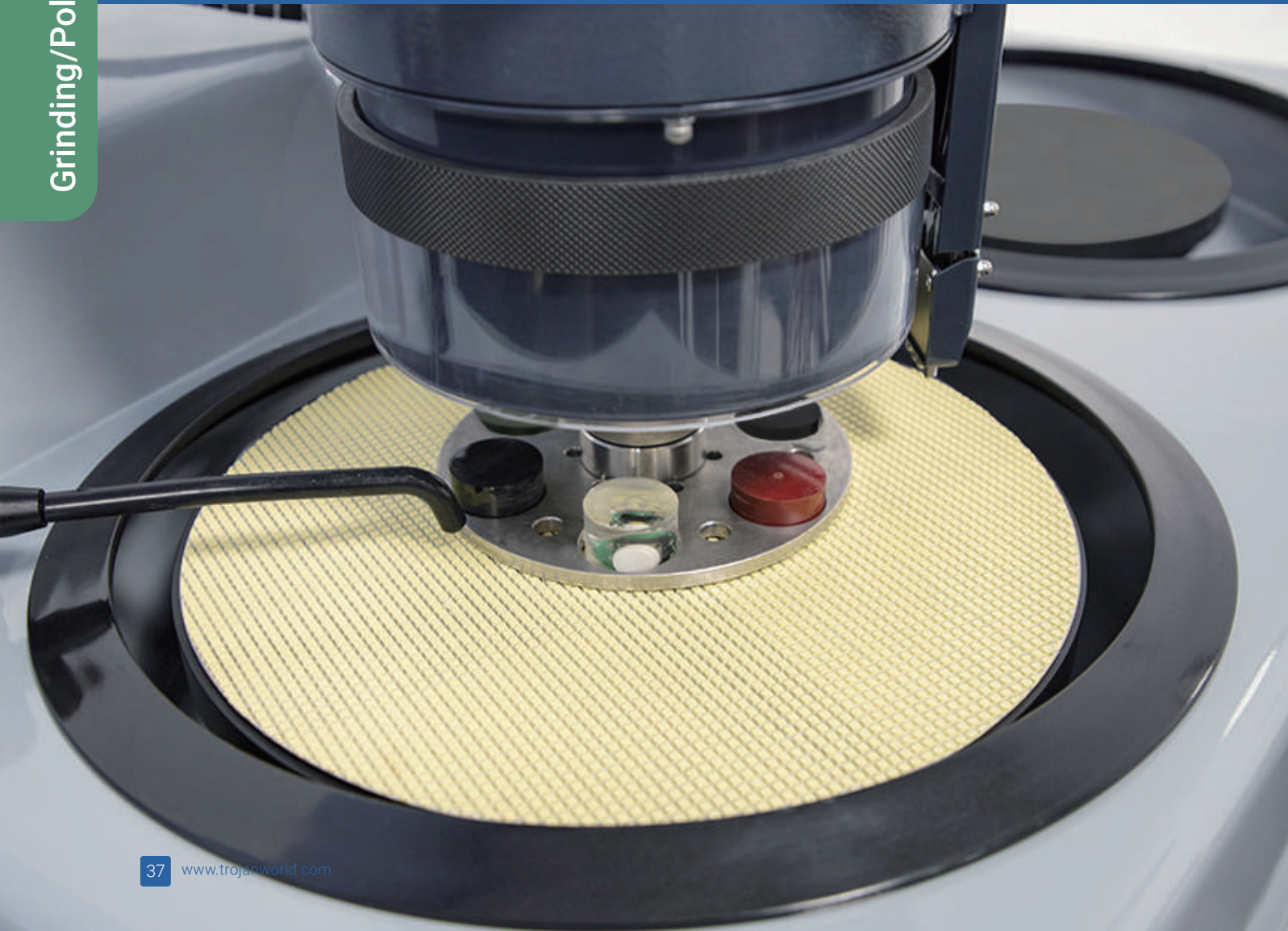
Grinding

The surface of mounting sample is not smooth. Grinding is to remove excess part of the sample with abrasive materials.

Polishing

Polishing is to use a small amount of polishing powder or polishing liquid to place on polishing cloth, later the sample is polished. Purpose of polishing is to remove the deformation and scratches during the grinding process, resulting in a scratched mirror surface for microscopic analysis of the microstructure.

Grinding/Polishing



New! Alpha-108
(page 40)



New! Alpha-210
(page 40)



New! Alpha-606
(page 42)



New! Alpha-610
(page 43)



Grinding/Polishing

New! SemiPOL
(page 45)



New! VP-430
(page 46)

